




## Joint2025 Hotel Shuttle Pick-up Instructions ( P: The shuttle parking area )

 **Dec. 17 – 20** **Hotel Arrival: 7:40 AM**

 **Place – Forward Line**

**The Place (Pickup Stop)** **Depart at 8:05 AM** **15 mins** → **Academia Sinica**

**Note:** The shuttle will only stop at The Place (Royal Hotel). Guests staying at Forward Hotel Taipei Nangang are kindly asked to **walk about 5 minutes** to The Place entrance for pickup.

 **Courtyard – Green World Line**

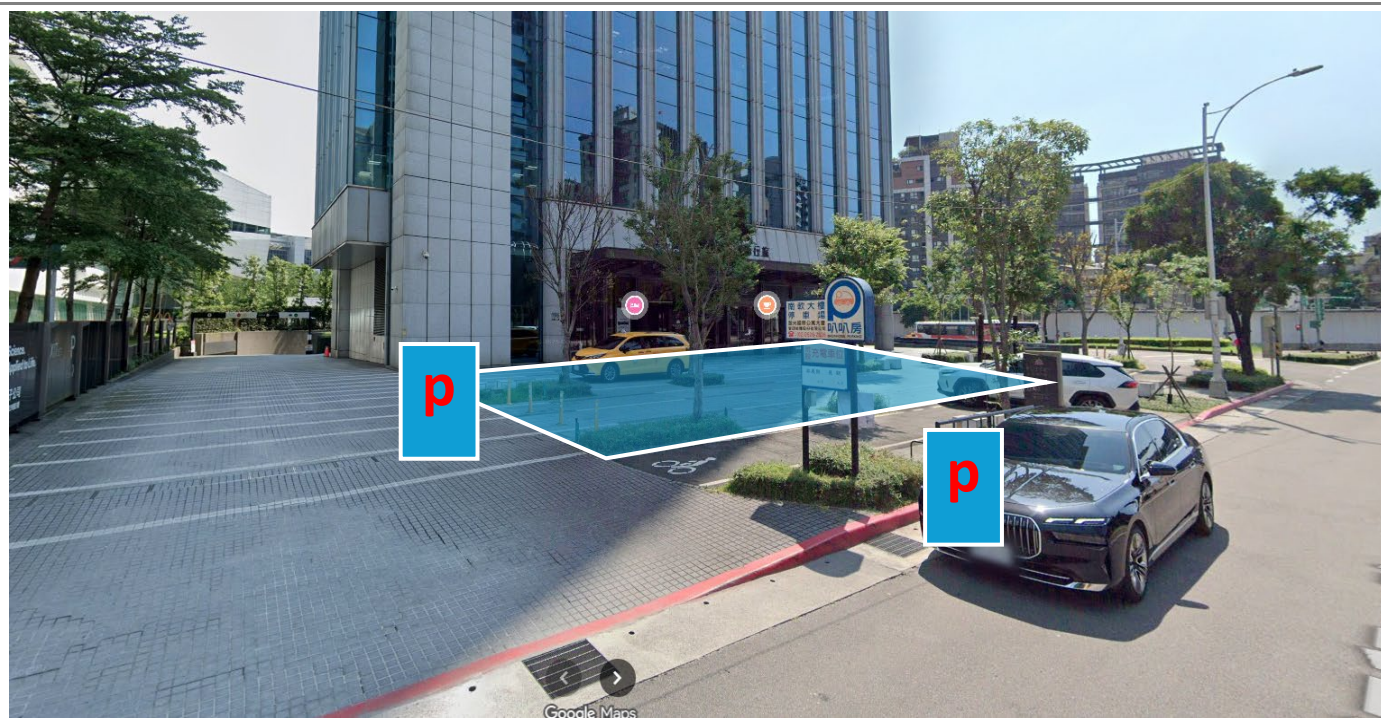
**Courtyard by Marriott Taipei** **Depart at 7:50 AM** **5 mins** → **Green World Hotel** **Depart at 8:05 AM** **15 mins** → **Academia Sinica**

### Place – Forward Line

Due to traffic rules, the shuttle will only stop at The Place (Royal Hotel). Guests staying at Forward Hotel Taipei Nangang are kindly asked to walk about 5 minutes to the entrance of The Place for pickup.

#### ● The Place (Royal Hotel) 南港老爺行旅

Please wait at the blue-marked area outside the hotel and board the shuttle as instructed by the staff.

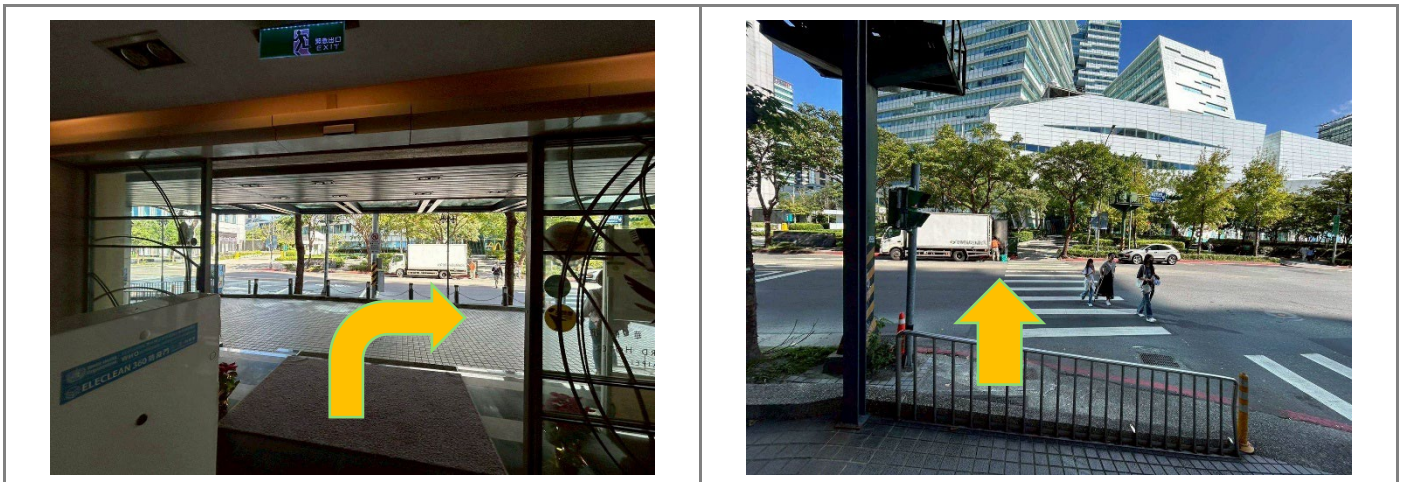


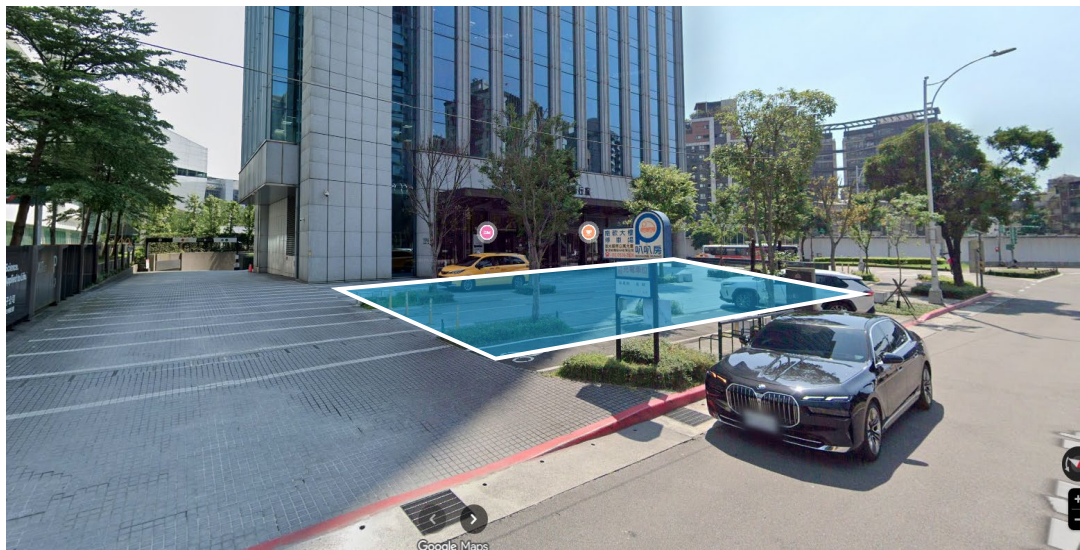
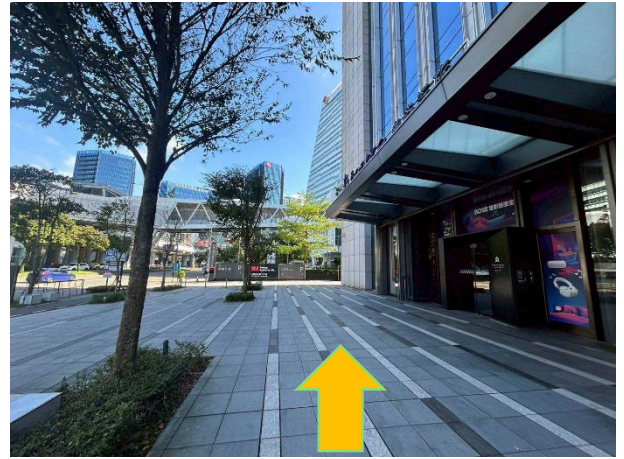
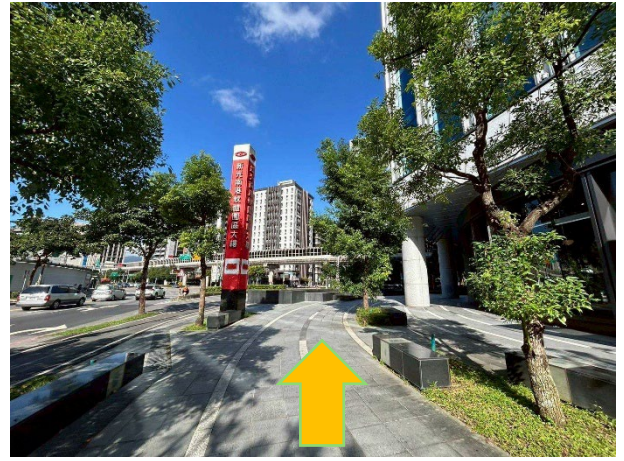
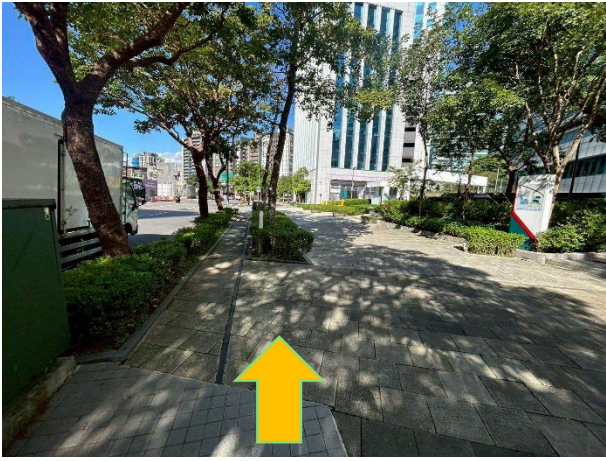
- **Forward Hotel Taipei 台北馥華商旅南港館**

GOOGLEMAP



The walking route to The Place Taipei (Nangang)





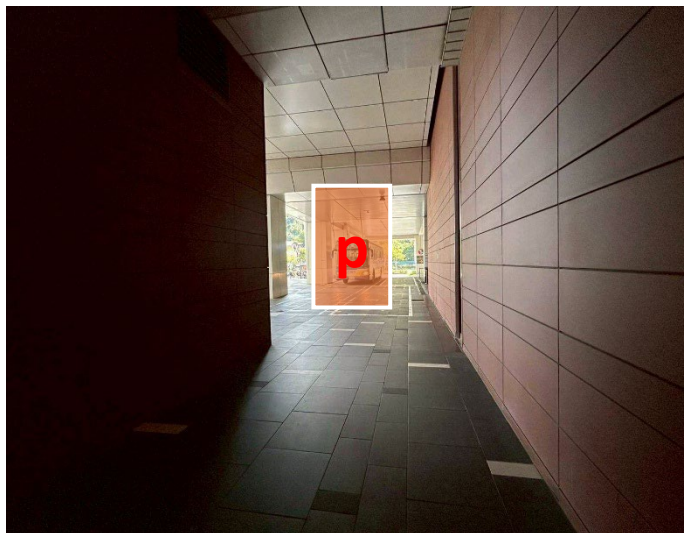
## Courtyard – Green World Line

### ● Courtyard by Marriott Taipei 六福萬怡酒店

You will see the “Shuttle Stop” sign near the hotel front desk on the 1st floor.



You will see the shuttle pick-up area right outside the door.



Please wait in the orange-marked area and board the shuttle as instructed by the staff.



● **Green World Hotel 洛碁大飯店南港館**

Please wait in the green-marked area outside the hotel and board the shuttle as instructed by the staff.

